

promoting YOUR business is OUR business



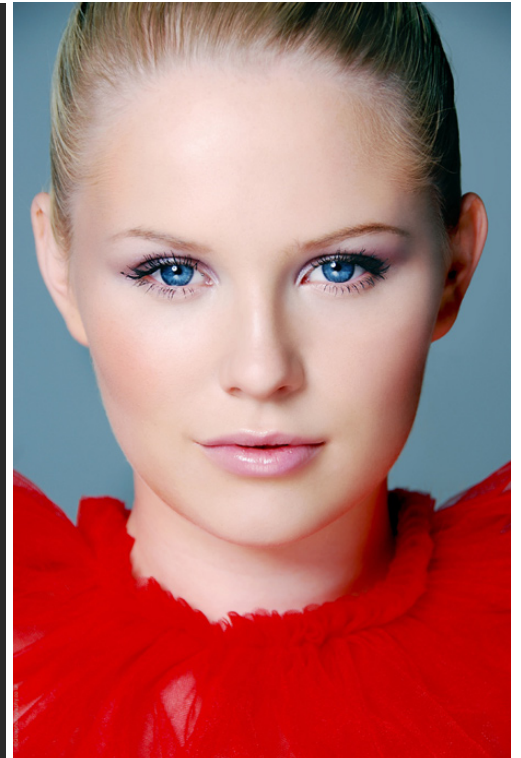
This year ice celebrates its tenth successful year in business.

Expansion of the agency has resulted in the opening of ice london.

We invite you to visit our website to view our new fashion division and growing promotional and event staffing department.

www.icemodels.co.uk

ice model isabelle alan (right) photographed by sarah monrose www.glowphotography.co.uk



don't take our word for it.....

"The girls were all very professional and really helped more than they were meant to do for both events. I would recommend to anyone"
Karol Tickner - HSBC Bank PLC

"Ice is the best agency you can work with, a professional partner in every way"
Melanie Rechenberg – Penta Gmbh – Mini launch

"I would happily recommend their services to anyone wanting a vibrant and approachable team who do so much more than simply staff events"
Nicola Thunhurst - RAC

"Punctual, attentive to instructions, proactive and pleasant when dealing with customers. I look forward to working with Ice on future projects".
Simon Childs - Agfa

"The models are intelligent, friendly and an absolute pleasure to work with"
Dan Allinson - Frank Thomas Group

"Ice are as cool as we've used Ice for a number of years, long may it continue"
Andy Brown - British School of Motoring

"We really appreciated the professionalism of your staff, we didn't need to worry about what was happening on-site, certainly a credit to you and the ice team"
Marco Gazelloni – British Telecom Events

"I've felt extremely confident leaving the team to the jobs in hand. The data capture achieved has been the highest on record so far. We will always be keen to use them on future events. Fantastic job, well done!"
Laura Carbutt, IMG UK Ltd

"It's a real pleasure to work with Ice. Their passion, energy and drive have been key at this critical time for our new business. Thank you".
Richard Fletcher – Home Store & More

"Consistently great staff, beautiful, smart, friendly and a great addition to any event team."
Rachel Derbyshire – RS Live

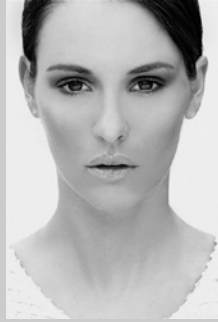
new faces: fashion & promotional divisions



Alena



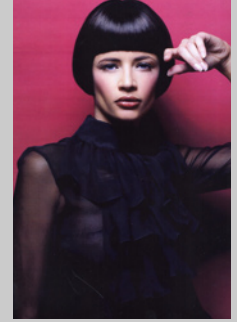
Debora



Danielle



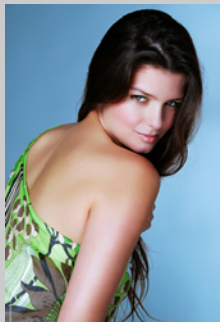
Isabelle



Tammy



Charlie



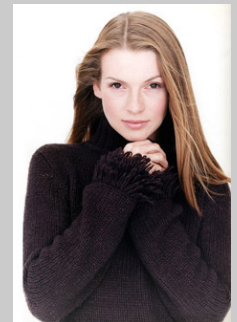
Rebecca



Rosie



Matt



Andrea

ice london agency facilities



Based in the heart of London's theatre district and next to Soho, the agency is easily accessible for castings, auditions or event training.

We can provide 16 meeting/audition suites offering video conferencing, catering, TV/video facilities. To discuss any of your model or event requirements please feel free to contact us at any time via telephone or e-mail.

icemodells t: mainline +44 (0) 1743 242422 t: london: +44 (0) 207 031 0808

e: lisa@icemodells.co.uk w: www.icemodells.co.uk

130 shaftesbury avenue london W1D 5EU uk company registration: 4107857 vat number: 762650426